

SEALEY

Ø180MM LIGHTWEIGHT DIGITAL POLISHER 1100W

MODEL NO: **ER1700PD.V2**

Thank you for purchasing a Sealey product. Manufactured to a high standard, this product will, if used according to these instructions, and properly maintained, give you years of trouble free performance.

IMPORTANT: PLEASE READ THESE INSTRUCTIONS CAREFULLY. NOTE THE SAFE OPERATIONAL REQUIREMENTS, WARNINGS & CAUTIONS. USE THE PRODUCT CORRECTLY AND WITH CARE FOR THE PURPOSE FOR WHICH IT IS INTENDED. FAILURE TO DO SO MAY CAUSE DAMAGE AND/OR PERSONAL INJURY AND WILL INVALIDATE THE WARRANTY. KEEP THESE INSTRUCTIONS SAFE FOR FUTURE USE.



Refer to instruction manual



Wear eye protection



Wear ear protection



Wear gloves



Wear a mask


1. SAFETY

1.1. ELECTRICAL SAFETY

- WARNING!** It is the user's responsibility to check the following:
Check all electrical equipment and appliances to ensure that they are safe before using. Inspect power supply leads, plugs and all electrical connections for wear and damage. Sealey recommend that an RCD (Residual Current Device) is used with all electrical products. You may obtain an RCD by contacting your local Sealey stockist.
if the multi-tool is used in the course of business duties, it must be maintained in a safe condition and routinely PAT (Portable Appliance Test) tested.

Electrical safety information. It is important that the following information is read and understood.

- 1.1.1. Ensure that the insulation on all cables and on the appliance is safe before connecting it to the power supply.
- 1.1.2. Regularly inspect power supply cables and plugs for wear or damage and check all connections to ensure that they are secure.
- 1.1.3. **Important:** Ensure that the voltage rating on the appliance suits the power supply to be used and that the plug is fitted with the correct fuse - see fuse rating in these instructions.
 - × **DO NOT** pull or carry the appliance by the power cable.
 - × **DO NOT** pull the plug from the socket by the cable. Remove the plug from the socket by maintaining a firm grip on the plug.
 - × **DO NOT** use worn or damaged cables, plugs or connectors. Ensure that any faulty item is repaired or replaced immediately by a qualified electrician.

- 1.1.4. This product is fitted with a BS1363/A 13 Amp 3 pin plug.
If the cable or plug is damaged during use, switch off the electricity supply and remove from use.
Replace a damaged plug with a BS1363/A 13 Amp 3 pin plug. If in doubt contact a qualified electrician.
Class II products are wired with live (brown) and neutral (blue) only are marked with the Class II symbol; 
A) Connect the BROWN live wire to the live terminal 'L'.
B) Connect the BLUE neutral wire to the neutral terminal 'N'.
C) After wiring, check that there are no bare wires and ensure that all wires have been correctly connected.
Ensure that the cable outer sheath extends inside the cable restraint and that the restraint is tight.
DO NOT connect either wire to the earth terminal.

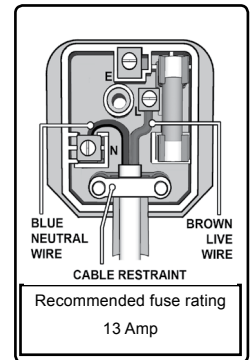
- 1.1.5. Sealey recommend that repairs are carried out by a qualified electrician.

- 1.1.6. **Cable extension reels.** When a cable extension reel is used it should be fully unwound before connection.
A cable reel with an RCD fitted is recommended since any product which is plugged into the cable reel will be protected. The section of the cores of the cable is important. We suggest 1.5mm² section as a minimum but to be absolutely sure that the capacity of the cable reel is suitable for this product and for others that may be used in the other output sockets, we recommend the use of 2.5mm² section cable.

NOTE: The ER1700PD has an electronic speed control, which requires a 'clean' and stable power supply. Normal 230V mains supply is suitable. However, the output from many petrol driven generators may not be suitable for this tool. Inverter type power supplies provide a much more stable output, and should present no problem.

1.2. GENERAL SAFETY

- WARNING!** Ensure Health & Safety, local authority, and general workshop practice regulations are adhered to when using this equipment.
- ✓ Familiarise yourself with the applications, limitations and hazards associated with this product.
- WARNING!** Disconnect from the mains power and ensure the disc is at a complete standstill before changing accessories, servicing or performing any maintenance.
- ✓ Maintain the polisher in good condition (use an authorised service agent).
- ✓ Replace or repair damaged parts. Use genuine parts only. Unauthorised parts may be dangerous and will invalidate the warranty.
- WARNING!** Keep all guards and holding screws in place, tight and in good working order. Check regularly for damaged parts. A guard or any other part that is damaged must be repaired/replaced before the tool is next used.
- ✓ Locate polisher in a suitable working area, keep area clean and tidy and free from unrelated materials.
- ✓ Ensure there is adequate lighting.
- ✓ Keep the polisher clean for best and safest performance.
- ✓ Before each use check abrasive attachments for condition. If worn or damaged replace immediately.
- ✓ Ensure there are no flammable or combustible materials near the work area.
- WARNING!** Wear approved eye safety protection, ear defenders and, if dust is generated, respiratory protection.



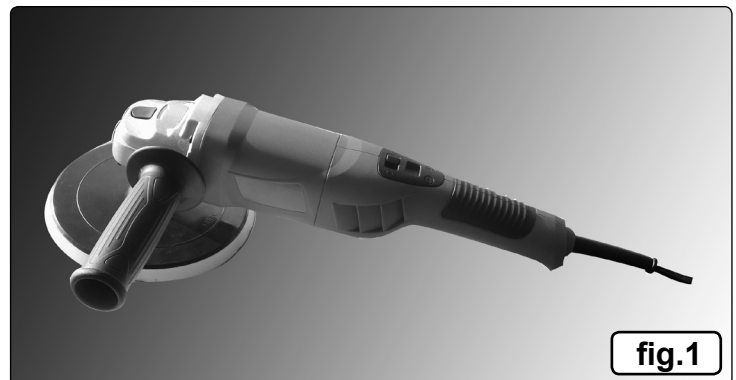
- ✓ Maintain correct balance and footing. Ensure the floor is not slippery and wear non-slip shoes.
 - ✓ Remove ill fitting clothing. Remove ties, watches, rings, and other loose jewellery, and contain and/or tie back long hair.
 - ✓ Keep children and unauthorised persons away from the working area.
 - ✓ Secure unstable work piece with a clamp, vice or other adequate holding device.
 - ✗ **DO NOT** use equipment for any purpose other than that for which it is designed.
 - ✗ **DO NOT** operate the polisher if any parts are damaged or missing as this may cause failure and/or possible personal injury.
 - **WARNING! DO NOT** polish any materials containing asbestos.
 - ✗ **DO NOT** switch the polisher on whilst the head is in contact with the work-piece and avoid unintentional starting.
 - ✗ **DO NOT** get the polisher wet or use in damp or wet locations or areas where there is condensation.
 - ✗ **DO NOT** operate spindle lock button while pad is rotating.
 - ✗ **DO NOT** operate power control while spindle lock is operating.
 - ✗ **DO NOT** allow untrained persons to operate the polisher.
 - ✗ **DO NOT** operate the polisher when you are tired or under the influence of alcohol, drugs or intoxicating medication.
 - ✗ **DO NOT** use the polisher where there are flammable liquids, solids or gases such as paint solvents, etc.
 - ✗ **DO NOT** leave the polisher operating unattended.
 - ✗ **DO NOT** carry the polisher with your finger on the power switch.
 - ✗ **DO NOT** pull the cord to remove the plug from the power supply.
 - ✓ Use a qualified person to lubricate and maintain the polisher.
 - ✓ When not in use unplug from the mains power supply and store in a safe, dry, childproof area.
- LEAD PAINT WARNING!** Paint once contained lead as a traditional ingredient. Contact with the dust from the removal of such paint is toxic and must therefore be avoided. The following action must be taken before using machine:
1. User must determine potential hazard relating to age of paint to be removed. (Modern paints do not have lead content).
 2. **DANGER!** Keep all persons and pets away from the working area. The following are particularly vulnerable to the effects of lead paint dust: Expectant women, babies and children.
 3. We recommend personal protection by using the following safety items:
A) Paint Spray Respirator. B) PE Coated Hooded Coverall. C) Latex Gloves.
 4. Take adequate measures to contain paint dust, flakes and scrapings. Wear safety equipment, as in (3) above, and thoroughly clean all areas when task is complete.
 5. Ensure the paint waste is disposed of in sealed bags or containers according to local regulations.

2. INTRODUCTION

Powerful 1100W motor enclosed in a lightweight housing. Maintains high torque levels at low speeds, ideal for polishing. Digital display for variable speed control from 1000-3000rpm, stepping-up in 500rpm increments. Features a top mounted slide button on/off switch allowing for a smooth, comfortable main handle grip. Spindle lock for fast and easy pad/foam head changes. Includes two handles - traditional side handle or over-the-top style 'D' handle, backing pad and polishing bonnet. Supplied in storage case.

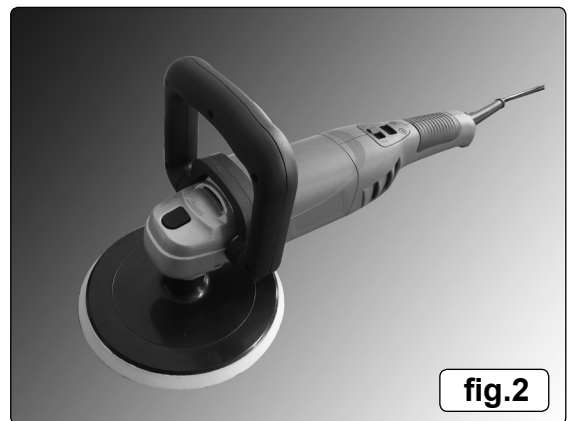
3. SPECIFICATION

Model no:	ER1700PD
Pad size:	Ø180mm
Thread size:	M14x2mm
Free speed:	1000-3000rpm
Power:	1100W
Supply:	230V
Cable length:	2m
Noise power:	82dB
Noise pressure:	71dB
Vibration:	3.36m/s ²
Uncertainty:	1.5m/s ²



4. ASSEMBLY

- **WARNING!** Ensure unit is not plugged into the mains before assembly.
- 4.1. **ATTACHING THE SIDE HANDLE**
 - 4.1.1. **Traditional Handle (fig.1):**
Attach the side handle to either side by screwing into the desired fixing hole in the head.
 - 4.1.2. **Over the Top Handle (fig.2):**
Slide both sides of the handle over the fixing holes (fig.3) and secure with the hex nuts supplied.
 - 4.2. **ATTACHING THE BACKING PAD**
 - 4.2.1. With the machine disconnected from the electrical supply, spin the backing pad onto the spindle until resistance from the motor is felt. The disc will tighten itself sufficiently when in use.
 - 4.3. **REMOVING THE BACKING PAD**
 - 4.3.1. With the machine disconnected from the electrical supply, depress the spindle lock button (fig.5). Turn the backing pad by hand until the spindle lock is felt to engage. Turn the backing pad clockwise (viewed from above) to release and remove.
 - 4.4. **ATTACHING THE LAMBSWOOL BONNET**
 - 4.4.1. Turn the edge of the bonnet back (fig.4), then place the backing disc centrally on the hook and loop fixing. When fixed, turn the edge of the bonnet back over the edge of the backing pad.



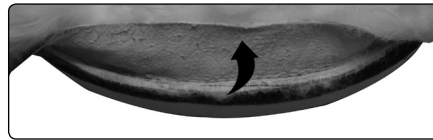
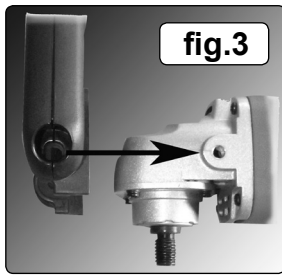


fig.4

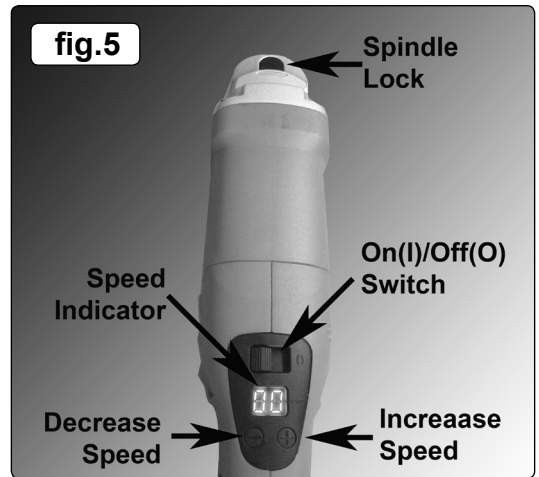


fig.5

5. OPERATION

- ❑ **WARNING!** Ensure you read, understand and apply the safety instructions in Section 1.
 - 5.1. Once connected to electrical supply, move the on/off switch to the 'I' position.
 - 5.1.1. At this point at this point, the speed indicator will show '00'.
 - 5.1.2. To start the machine, press the '+' button; the polisher will run at 1000rpm. Each subsequent press will increase the speed by 500rpm up to a maximum of 3000rpm.
 - 5.1.3. The speed indication needs to be multiplied by 100 to find the actual speed.
- NOTE:** Each time the machine is switched off, the speed setting will revert to zero.

6. MAINTENANCE

- ❑ **WARNING!** Before attempting any maintenance ensure the unit is unplugged from the mains power supply.
- 6.1. Keep the machine clean and dry. **DO NOT** use abrasives or solvents to clean the unit. Ensure all external head screws are tight.
- 6.2. Clean regularly by blowing a jet of compressed air through side vents to ensure motor ventilation is kept clear.
- ❑ **WARNING!** Wear approved safety eye protection and, if necessary, respiratory protection.
- 6.3. When not in use disconnect from mains supply and store in a safe, dry childproof location.

WARNING! – Risk of Hand Arm Vibration Injury.

This tool may cause Hand Arm Vibration Syndrome if its use is not managed adequately.

This tool is subject to the vibration testing section of the Machinery Directive 2006/42/EC.

This tool is to be operated in accordance with these instructions.

Measured vibration emission value (a): 3.36 m/s²

Uncertainty value (k): 1.5 m/s²

Please note that the application of the tool to a sole specialist task may produce a different average vibration emission. We recommend that a specific evaluation of the vibration emission is conducted prior to commencing with a specialist task.

A health and safety assessment by the user (or employer) will need to be carried out to determine the suitable duration of use for each tool.

NB: Stated Vibration Emission values are type-test values and are intended to be typical.

Whilst in use, the actual value will vary considerably from and depend on many factors.

Such factors include; the operator, the task and the inserted tool or consumable.

NB: ensure that the length of leader hoses is sufficient to allow unrestricted use, as this also helps to reduce vibration.

The state of maintenance of the tool itself is also an important factor, a poorly maintained tool will also increase the risk of Hand Arm Vibration Syndrome.

Health surveillance.

We recommend a programme of health surveillance to detect early symptoms of vibration injury so that management procedures can be modified accordingly.

Personal protective equipment.

We are not aware of any personal protective equipment (PPE) that provides protection against vibration injury that may result from the uncontrolled use of this tool. We recommend a sufficient supply of clothing (including gloves) to enable the operator to remain warm and dry and maintain good blood circulation in fingers etc. Please note that the most effective protection is prevention, please refer to the Correct Use and Maintenance section in these instructions. Guidance relating to the management of hand arm vibration can be found on the HSC website www.hse.gov.uk - Hand-Arm Vibration at Work.



ENVIRONMENT PROTECTION

Recycle unwanted materials instead of disposing of them as waste. All tools, accessories and packaging should be sorted, taken to a recycling centre and disposed of in a manner which is compatible with the environment. When the product becomes completely unserviceable and requires disposal, drain any fluids (if applicable) into approved containers and dispose of the product and fluids according to local regulations.



WEEE REGULATIONS

Dispose of this product at the end of its working life in compliance with the EU Directive on Waste Electrical and Electronic Equipment (WEEE). When the product is no longer required, it must be disposed of in an environmentally protective way. Contact your local solid waste authority for recycling information.

Note: It is our policy to continually improve products and as such we reserve the right to alter data, specifications and component parts without prior notice. Please note that other versions of this product are available. If you require documentation for alternative versions, please email or call our technical team on technical@sealey.co.uk or 01284 757505.

Important: No Liability is accepted for incorrect use of this product.

Warranty: Guarantee is 12 months from purchase date, proof of which is required for any claim.

Sealey Group, Kempson Way, Suffolk Business Park, Bury St Edmunds, Suffolk. IP32 7AR



01284 757500



01284 703534



sales@sealey.co.uk



www.sealey.co.uk